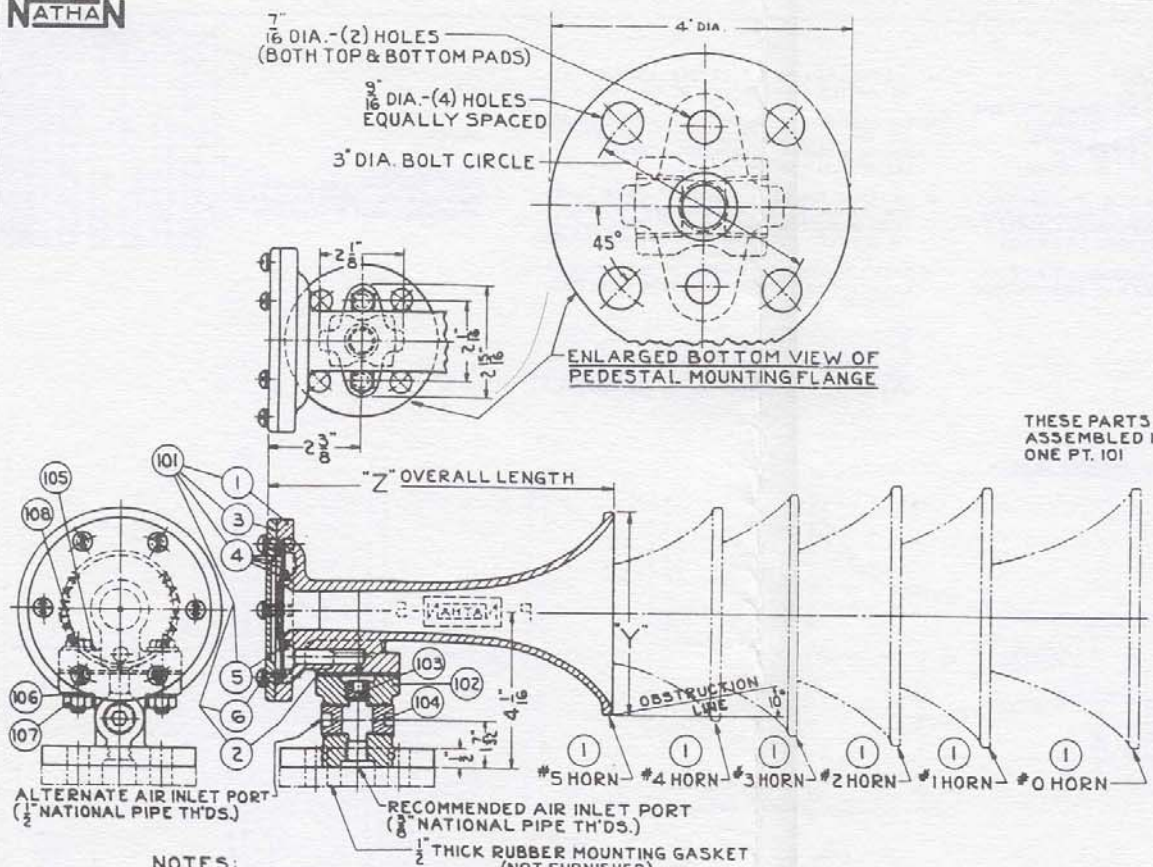


NATHAN



PIECES REQUIRED							LIST OF MATERIAL		
LINE NO.	LINE NO.	LINE NO.	LINE NO.	LINE NO.	LINE NO.	LINE NO.	SHOP OR SUB-ASSEMBLY	DESCRIPTION	PART NO.
—	—	—	—	—	—	—	WH-5401	#0 HORN ASSEMBLY	101
—	—	—	—	—	—	—	WH-5402	#1 " "	—
—	—	—	—	—	—	—	WH-5403	#2 " "	—
—	—	—	—	—	—	—	WH-5404	#3 " "	—
—	—	—	—	—	—	—	WH-5405	#4 " "	—
—	—	—	—	—	—	—	WH-5406	#5 " "	—
1	1	1	1	1	1	1	C-21064	PEDESTAL	102
1	1	1	1	1	1	1	C-21073-1	RESTRICTOR	103
2	2	2	2	2	2	2	C-20964-5	PIPE PLUG - 1/2" N.P.T.	104
2	2	2	2	2	2	2	41653-10	PLAIN WASHER	105
2	2	2	2	2	2	2	E-28887-10	LOCK	106
2	2	2	2	2	2	2	G-164-10	HEX. NUT	107
2	2	2	2	2	2	2	C-28974-10	BOLT	108

FOR REPAIRS THESE PARTS WILL BE FURNISHED ONLY AS A PACKAGED DIAPHRAGM ASSEMBLY UNIT #WH-5A-61

C-21074	#0 HORN	
C-21056	#1 " "	
C-21057	#2 " "	
C-21058	#3 " "	1
C-21059	#4 " "	
C-21060	#5 " "	
C-21063	HORN GASKET	2
C-21065	HORN CAP	3
C-21070	DIAPHRAGM	
C-21067	SEAT	
C-21068	GASKET (THICK)	4
C-21069	" (THIN)	
C-21072	SEAT RETAINER	5
428361	SEMS FASTENER	6

- NOTES:**
- HORNS TUNED AS FOLLOWS:-

#0 A NATURAL 220.0 C.P.S.	} CHORD "A" MAJOR	
#1 C SHARP 277.18 C.P.S.		} DOMINANT
#2 E NATURAL 329.6 C.P.S.		
#3 G NATURAL 391.9 C.P.S.		} SEVENTH
#4 A NATURAL 440.0 C.P.S.		
#5 C SHARP - 554.3 C.P.S.	} INVERSION	
 - AIR PRESSURE AT THE BASE OF THE WHISTLE FOR MODULATED LOUDNESS TO BE NOT LESS THAN 10 P.S.I. AT TEST PORT WHEN WHISTLE IS BLOWING. (WITHOUT RESTRICTOR PT. 103).
 - ALL OBSTRUCTIONS WHICH MIGHT ACT AS Baffles ARE TO BE BELOW A 10° OBSTRUCTION LINE.

- FOR FULL AND MODULATED TONES USE NATHAN AIR WHISTLE OPERATING VALVE GA-5199.
- THE DISTANCE BETWEEN THE WHISTLE VALVE AND THE WHISTLE SHOULD BE AS SHORT AS POSSIBLE SO AS TO GIVE QUICK RESPONSE TO THE WHISTLE VALVE.
- TO REDUCE THE TRANSMISSION OF VIBRATION TO THE CABIT IS RECOMMENDED THAT A 1/2 INCH THICK RUBBER GASKET BE PLACED BETWEEN THE WHISTLE FLANGE AND THE MOUNTING FLANGE.
- THE FILTER TO BE USED SHOULD BE OF SUFFICIENT CAPACITY TO KEEP THE PRESSURE DROP TO A MINIMUM.
- WHEN ASSEMBLING HORNS, IT IS IMPORTANT THAT THE RUBBER DIAPHRAGM SEAT BE ASSEMBLED WITH THE BEVELED SIDE OF SEAT IN THE DIRECTION OF THE HORN CAP. ALSO THAT THE THICK RUBBER GASKET BE LOCATED ON THE CAP SIDE OF DIAPHRAGM.

5 1/4	8 25/32	C SHARP 277.18 C.P.S.	5	P5A	6
5 1/2	11 1/16	A NATURAL 220.0 C.P.S.	4	P4A	5
6 1/4	13 3/4	G NATURAL 391.9 C.P.S.	3	P3A	4
6 1/2	16 1/2	E NATURAL 329.6 C.P.S.	2	P2A	3
6 3/4	18 1/2	C SHARP 277.18 C.P.S.	1	PIA	2
6 7/8	22 1/2	A NATURAL 220.0 C.P.S.	0	POA	1
Y	Z	PITCH	HORN NO.	MODEL NO.	LINE NO.

NATHAN MFG. CORP. NEW YORK, N.Y.

NATHAN TYPE P SINGLE AIRCHIME HORN WITH PEDESTAL

REV. ABC

DESIGNED BY L.S. SCALE 2"=1" 0

CHECKED BY DATE 8-18-55

WH-5435

C-NOTE #4 - PART GA-5199 WAS GA-5444. 10-14-58.
 B-NOTE #4 REVISED BY NOTE #8 ADDED. 8-15-57.
 A-4" DIA. MOUNTING FLANGE WAS 3 3/4" x 3 3/4". 1-21-57.